

REACTION TORQUE CELLS

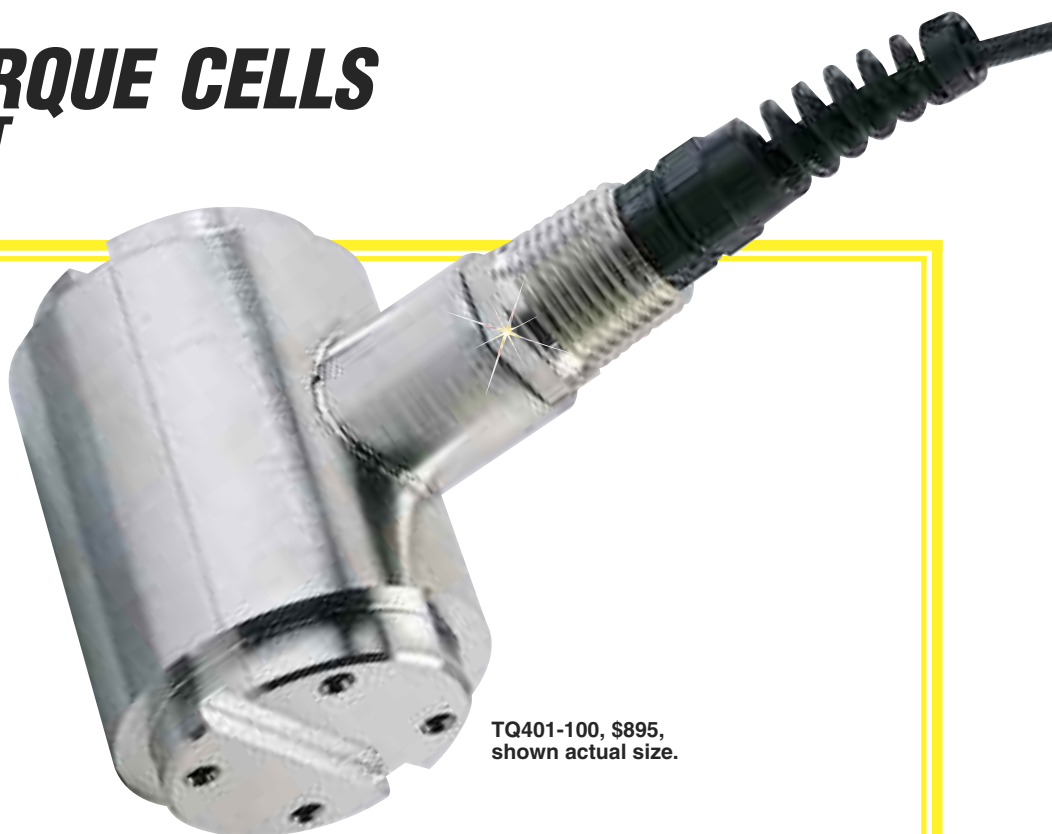
SURFACE KEY MOUNT

TQ401 Series

Reaction Torque
0-30 ft-lb to 0-250 ft-lb
0-40 N-m to 0-340 N-m

1 N-m = 0.7375 ft-lb
 1 ft-lb = 1.356 N-m
 1 N-m = 8.85 in-lb
 1 ft-lb = 12 in-lb

All Models
\$895



TQ401-100, \$895,
 shown actual size.

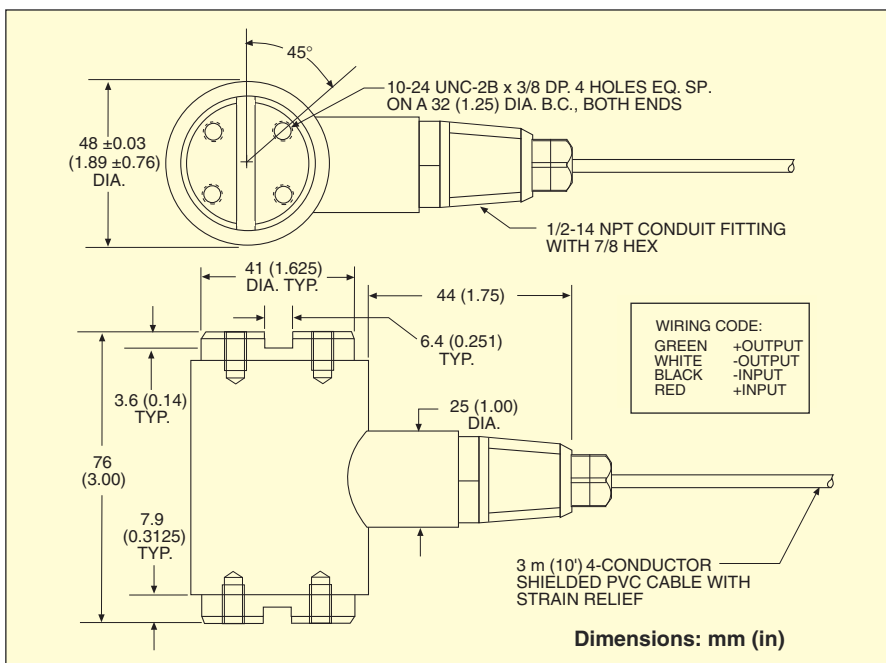


- ✓ All Stainless Steel Case for Long-Term Reliability in Industrial Environments
- ✓ High Accuracy
- ✓ Shielded Cable for Precise Low-Noise Measurements
- ✓ Heavy-Duty Mounting for Positive, Non-Slip Connection

SPECIFICATIONS

Output: 2 mV/V
Excitation: 10 Vdc, 15V max
Input Resistance: 360 Ω min
Output Resistance: 350 ±5 Ω
Accuracy Class: ±0.2% FSO
Linearity: ±0.2% FSO
Hysteresis: ±0.1% FSO
Repeatability: ±0.05% FSO
Zero Balance: ±2% FSO
Operating Temp Range:
 -54 to 107°C (-65 to 225°F)
Compensated Temp Range:
 16 to 71°C (60 to 160°F)
Thermal Effects:
Zero: ±0.005% FSO/°F
Span: ±0.005% rdg/°F

Safe Overload: 150% of capacity
Ultimate Overload: 300% of capacity
Construction: Stainless steel
Protection Class: IP65
Electrical: 3 m (10') 4-conductor, shielded, color-coded PVC cable with strain relief



AVAILABLE FOR FAST DELIVERY!

To Order (Specify Model Number)

RANGE (ft-lb)	MODEL NO.	PRICE	COMPATIBLE METERS*
0 to 30	TQ401-30	\$895	DP41-S, DP25B-S
0 to 100	TQ401-100	895	DP41-S, DP25B-S
0 to 250	TQ401-250	895	DP41-S, DP25B-S

Comes complete with 5-point calibration.

* See section D for compatible meters. Metric ranges available – consult Engineering.

Ordering Examples: TQ401-30, 30 in-lb range reaction torque sensor, \$895.

TQ401-250, 250 in-lb range reaction torque sensor, \$895.

Recommended Reference Book: Strength of Materials and Structures, ME-1758, \$135. See Section Y for Additional Books

