

FLUSH DIAPHRAGM TRANSMITTER

STAINLESS STEEL WETTED PARTS

MOUNTING FITTINGS AVAILABLE

See Section Y for a Selection of Scientific, Technical, and Reference Books Available from omega.com

PX103 Series

4 to 20 mA Output
0-15 to 0-20,000 psi
0-1 to 0-1300 bar

1 bar = 14.5 psi
1 kg/cm² = 14.22 psi
1 atmosphere = 14.7 psi = 29.93 inHg = 760.2 mmHg = 1.014 bar

Starts at
\$495



- ✓ All Stainless Steel
- ✓ Low-Noise 4 to 20 mA Output
- ✓ Flush Diaphragm for Hard-to-Measure Fluids
- ✓ Ideal for Tank and Level Applications

OMEGA's PX103 Series transmitters feature a rugged all stainless steel case and a high-reliability, low-noise 4 to 20 mA output. They are designed for use in critical applications in wastewater management, chemical manufacturing, water processing, tank and level operations, and other industrial applications in which a non-plugging flush diaphragm is needed.

SPECIFICATIONS

Excitation: 10 to 40 Vdc

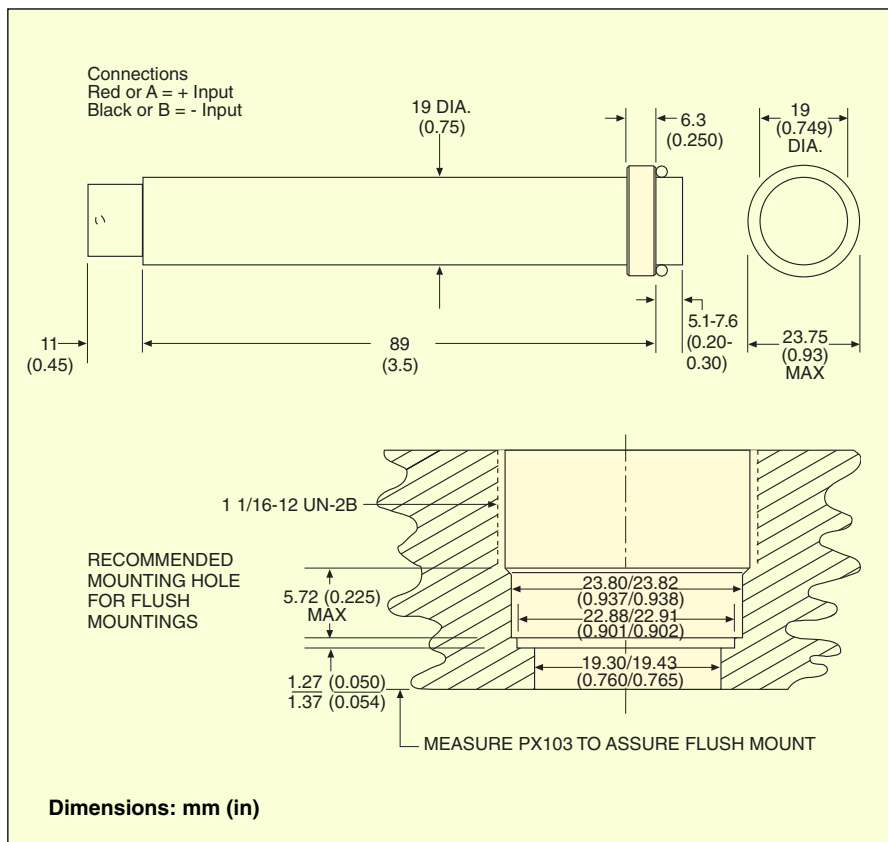
Output: 4 to 20 mA

Zero Balance: 4 mA ±0.2 mA

Accuracy:

<100 psi: ±1% linearity, hysteresis and repeatability combined

≥100 psi: ±0.5% linearity, hysteresis and repeatability combined



PX103U0-025GI, \$495, shown actual size.

Cable style.

PX103U1-025GI, \$495, shown actual size.

Twist-lock style.



CURRENT OUTPUT
PRESSURE TRANSDUCERS
B

FLUSH DIAPHRAGM TRANSMITTER

Thermal Effects:

<100 psi:
Span: $\leq \pm 2\%$ within compensated range
Zero: $\leq \pm 1\%$ within compensated range
 ≥ 100 psi:
Span: 0.003% rdg/°F
Zero: 0.0045% FS/°F

Proof Pressure:

<100 psi: 200% of rated pressure
 ≥ 100 psi: 150% of rated pressure, 30,000 psi maximum

Burst Pressure:

<100 psi: 500% of rated pressure
 ≥ 100 psi: 300% of rated pressure, 50,000 psi maximum

Wetted Parts:

Ranges <100 psi: 316 SS
Ranges ≥ 100 psi: 17-4 PH SS

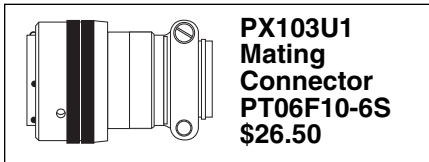
O-Ring: Not included #2-018

Electrical Connection:

PTIH-10-6P or equal or 3 m (10') 2-conductor shielded PVC cable

Mating Connector:

PT06F10-6S (sold separately)



ACCESSORY

MODEL NO.	PRICE	DESCRIPTION
PT06F10-6S	\$26.50	Mating connector for PX103U1 Series

MOST POPULAR MODELS HIGHLIGHTED!

To Order (Specify Model Number)			
RANGE	MODEL NO.	PRICE	COMPATIBLE METERS**
ABSOLUTE PRESSURE (All Ranges Available in Absolute Pressure)			
0 to 15 psi	0 to 1 bar	PX103U[*]-015AI	\$565 DP41-E, DP25B-E, DP24-E
0 to 25 psi	0 to 1.7 bar	PX103U[*]-025AI	565 DP41-E, DP25B-E, DP24-E
0 to 50 psi	0 to 3.4 bar	PX103U[*]-050AI	565 DP41-E, DP25B-E, DP24-E
GAGE PRESSURE (All Ranges Also Available in Sealed Gage Pressure)			
0 to 15 psi	0 to 1 bar	PX103U[*]-015GI	\$495 DP41-E, DP25B-E, DP24-E
0 to 25 psi	0 to 1.7 bar	PX103U[*]-025GI	495 DP41-E, DP25B-E, DP24-E
0 to 50 psi	0 to 3.4 bar	PX103U[*]-050GI	495 DP41-E, DP25B-E, DP24-E
0 to 100 psi	0 to 6.9 bar	PX103U[*]-100GI	555 DP41-E, DP25B-E, DP24-E
0 to 200 psi	0 to 13.8 bar	PX103U[*]-200GI	555 DP41-E, DP25B-E, DP24-E
0 to 500 psi	0 to 34.5 bar	PX103U[*]-500GI	555 DP41-E, DP25B-E, DP24-E
0 to 1000 psi	0 to 68.9 bar	PX103U[*]-1KGI	555 DP41-E, DP25B-E, DP24-E
0 to 2000 psi	0 to 138 bar	PX103U[*]-2KGI	555 DP41-E, DP25B-E, DP24-E
0 to 3000 psi	0 to 207 bar	PX103U[*]-3KGI	555 DP41-E, DP25B-E, DP24-E
0 to 5000 psi	0 to 345 bar	PX103U[*]-5KGI	555 DP41-E, DP25B-E, DP24-E
0 to 10,000 psi	0 to 689 bar	PX103U[*]-10KGI	555 DP41-E, DP25B-E, DP24-E
0 to 15,000 psi	0 to 1034 bar	PX103U[*]-15KGI	555 DP41-E, DP25B-E*, DP24-E
0 to 20,000 psi	0 to 1379 bar	PX103U[*]-20KGI	555 DP41-E, DP25B-E*, DP24-E

Comes complete with 5-point NIST traceable calibration. Metric ranges available – consult Engineering.

* 4-digit meter, counts in increments of 10.

** See section D for compatible meters.

[*] To order cable style insert "0" into model number; to order connector style insert "1".

To order absolute pressure ranges, replace "G" in model number with "A" and add \$70.

To order sealed gage pressure models, replace "G" in model number with "S" (no extra charge). To order extra lead length [3 m (10') standard], add suffix "-(Length of cable in feet)" and \$2 for each foot beyond 10'.

Ordering Example: PX103U1-100GI, 100 psi gage pressure, connector style transducer, \$555. PT06F10-6S, mating connector (sold separately), \$26.50.

Flush Mount Adaptors for PX103 Series Transducers

AD-1SS 10,000 psi

316 Series stainless steel, 1/4 NPT male

Dimensions: mm (in) \$125

O-Ring Provided with Each Adaptor

AD-3SS 10,000 psi

316 Series stainless steel, 1 NPT male flush mounting [-3.18 (1/8) on flush tolerance]

Dimensions: mm (in) \$130

"O" RINGS FKM or Polyurethane

Use for pressures under 10,000 psi:
#2-018-V
 FKM\$10/Pk of 10

Use for pressures of 10,000 psi and higher:
#2-018-P
 POLYURETHANE .. \$15/Pk of 10